

PETER AND THE STARCATCHER

MAGIC SHEET

LD: Joe Spinogatti
ALD: Jessie Lynn Smith

The Charity Randall Theater
 Date: 03/12/17
UPDATED: 03/24/17

161 T SHAFT N/C

163	166
162	165
161	164

111 HEAD R33+R18

112	114
111	113

215 ONSTAGE STARS N/C 215 & 218

141 T SIDE L172

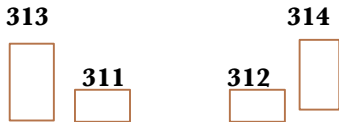
143	146
142	145
141	144

101 MID R53+R56

102	104
101	103

351 PALLET G330 351-354

311 HALLWAY G330



SPECIALS

- HAZE 411
- FOG 401
- STROBE 361
- STROBE CYC 362
- SPECIAL 511
- ROOM TBD 371 & 372
- Extra Motes 216 & 217

PRACTICALS

- CHEST 491
- DS LANTERN 481
- US LANTERN 482
- STARDROP 700

- DS STARS Group 461
- US STARS Group 471

131 SIDE R03

133	136
132	135
131	134

151 B SHAFT N/C

152	154
151	153

121 B SIDE L723

123	126
122	125
121	124

91 SHIN R60+R69

92	94
91	93

PETER AND THE STARCATCHER

MAGIC SHEET

LD: Joe Spinogatti

ALD: Jessie Lynn Smith

The Charity Randall Theater

Date: 03/12/17

UPDATED: 03/24/17

#	COLOR	STRING B
1	R00	CLEAR
2	R16	LIGHT AMBER
3	R343	NEON PINK
4	R68	PARRY SKY BLUE
5	L134	GOLDEN AMBER
6	L139	PRIMARY GREEN
7	L343	SPECIAL MEDIUM LAVENDER
8	R19	FIRE
9	R80	PRIMARY BLUE
10	L106	PRIMARY RED
11	G760	AQUA BLUE
12	G370	SPICE
13	G930	CONGO BLUE
14	R39	SKELETON EXOTIC SANGRIA
15	L161	SLATE BLUE
16	G850	PRIMARY BLUE

REVOLUTION STRING

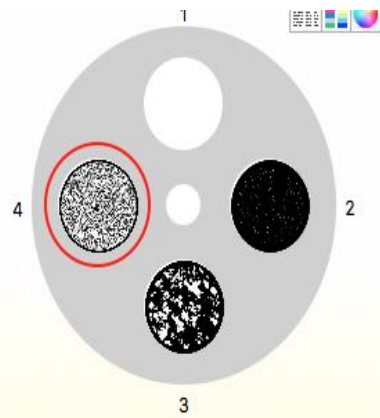
#	COLOR	STRING F
1	R00	CLEAR
2	R02	BASTARD AMBER
3	R316	GALLO GOLD
4	R26	LIGHT RED
5	R37	PALE ROSE PINK
6	R51	SURPRISE PINK
7	R64	LIGHT STEEL BLUE
8	R68	PARRY SKY BLUE
9	R80	PRIMARY BLUE
10	R89	MOSS GREEN
11	R09	PALE AMBER GOLD
12	R343	NEON PINK
13	R358	ROSE INDIGO
14	R357	ROYAL LAVENDER
15	R72	AZURE BLUE
16	R92	TURQUOISE

COLORS NEED TO BE COMBINED

Label	Description	Type	Gobo Size	Count?
1		Open		<input type="checkbox"/>
2	R71054	Gobo		<input checked="" type="checkbox"/>
3	R77764	Gobo		<input checked="" type="checkbox"/>
4	R78234	Gobo		<input checked="" type="checkbox"/>

Add Del Slot
 Add Del Notch

Drag notches into desired location on either inner or outer edge



Board Op: Amy
Spot 1: Rachel
Spot 2: Michael